

가 KIGAZ 300



4
O₂, CO (H₂), NO, NO₂ or SO₂



CO



-	-	가
-	-	-
- 가	LED	-
-	-	- 2 GB (100,000)
- 3가	-	- 10 3.6V, 4,400 mA

가	-	-	CO, CO ₂	-
-	4% CO	-	가 가 (CH ₄)	-
-	O ₂ , CO (H ₂), CO ₂ , NO, NO ₂ or SO ₂	-	-	가

-	-	가	-	-	2
---	---	---	---	---	---

-	15가	-	-	-
5가	가	가	-	-

* **Combustibles** : Sahara/Fos-sur-Mer Natural Gas, Groningen Natural Gas, Russia/North Sea Natural Gas, Propane, LPG, Butane, Light Oil, Heavy Oil, Bituminous coal, Hard coal, Coke gas, Bio fuel 5%, Wood 20%, Wood-chip 21%, Pellet 8%

PC	USB Bluetooth (optional)
/	IP40
	3.6V, 4,400 mA
	10
	From -5 to +50°C
	From -10 to +50°C

> Overview

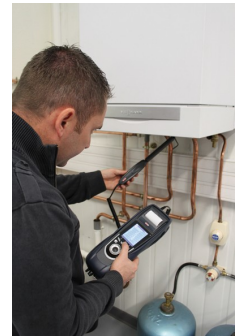
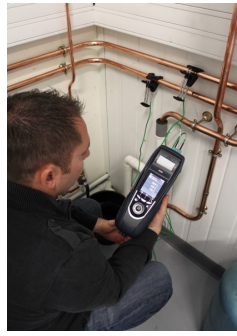
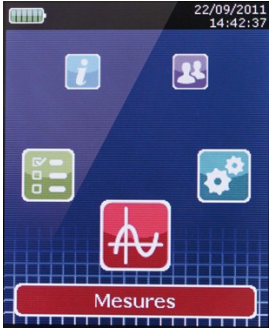


(CH4, CO, CO2, Pt100 ...)



2





2

CO, CO2

	KIGAZ 300 CLA	KIGAZ 300 STD	KIGAZ 300 PRO
	O2, CO(H2)	O2, CO(H2), NO	O2 , CO(H2) NO, NO2 or SO2
가	Yes : CH ₄ , NO, NO ₂ , SO ₂	Yes : CH ₄ , NO ₂ , SO ₂	/
	yes	yes	yes
	yes	yes	yes
300 mm 가	yes	yes	yes
	yes	yes	yes
	yes	yes	yes

KIGAZ

가

, 가 (, 가) .



SCOT : CO

SCO2T : CO2

SPA 150SP : Pt100

SKCL 150 :

SCI :

SDFG : 가 (CH4)

PSK180 : 500 , 180mm 가

PSK300 : 500 , 300mm 가

PSL750 : 1,000 , 750mm 가

KEG : 가

PMO : (opacity pump)

Bluetooth® module :

LOGAZ

LOGAZ (, ,) , 가

¹Please see the technical datasheet of accessories for kigaz for further details